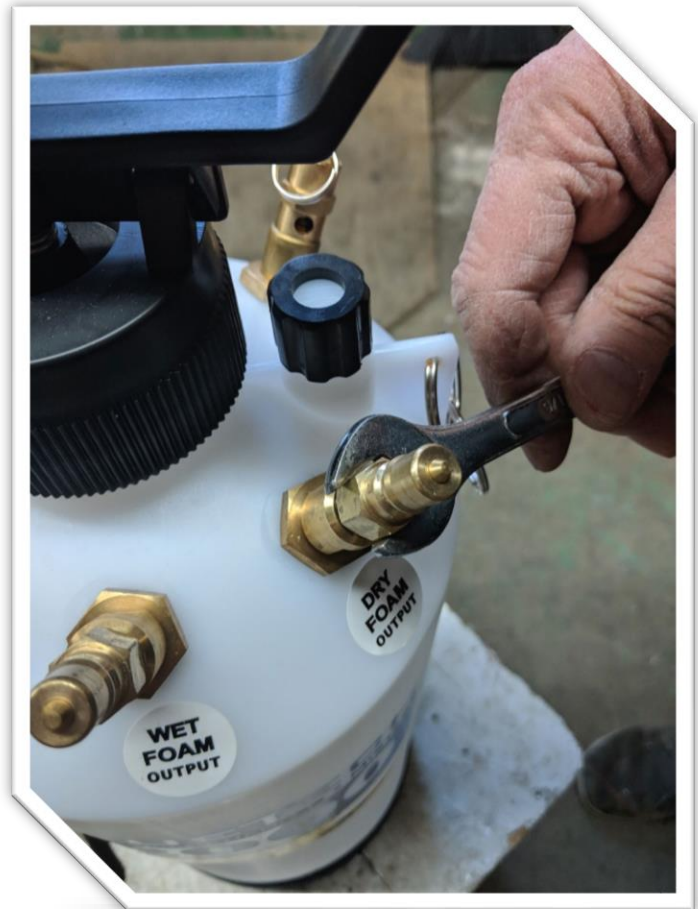


DRY FOAM TUBE MAINTENANCE

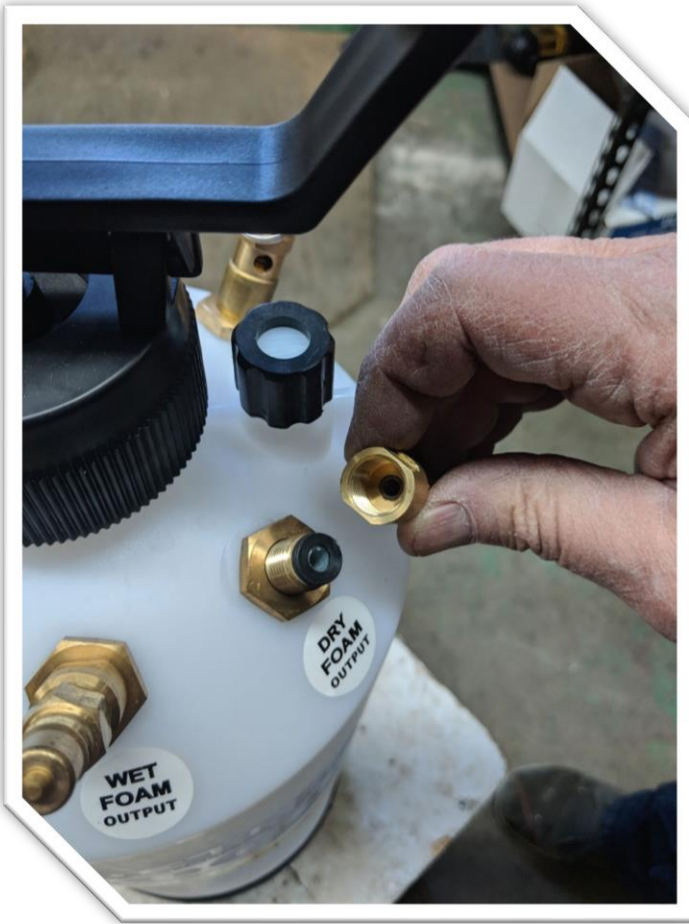
Loosen the Brass Quick Disconnect from the Dry Foam Bulkhead using a 9/16" Wrench.



Once loose, unthread the Quick Disconnect by hand.



Once removed, pull the white dry foam tube and black rubber bushing up and out from the tank.



Remove the black rubber bushing from the white tube if it is not tightly sealed against the tube.



Use Scotch-Brite or a similar material to add a roughened texture to the end of the tube.



Apply Super or Crazy Glue to the end of the white tube. Seat the rubber bushing back on to the end of the tube making sure the tube and bushing are flush at the end. Allow the glue time to dry.



At the other end of the tube will be a blue or gold venturi. During use debris can make its way into the venturi orifice and needs to be removed. This can be done using a small object such as a paper clip.



Once complete, the tube can be placed back down inside the Dry Foam bulkhead. When threading the quick disconnect back onto the bulkhead, hand tighten first then complete another quarter turn using a 9/16" wrench to form the seal.